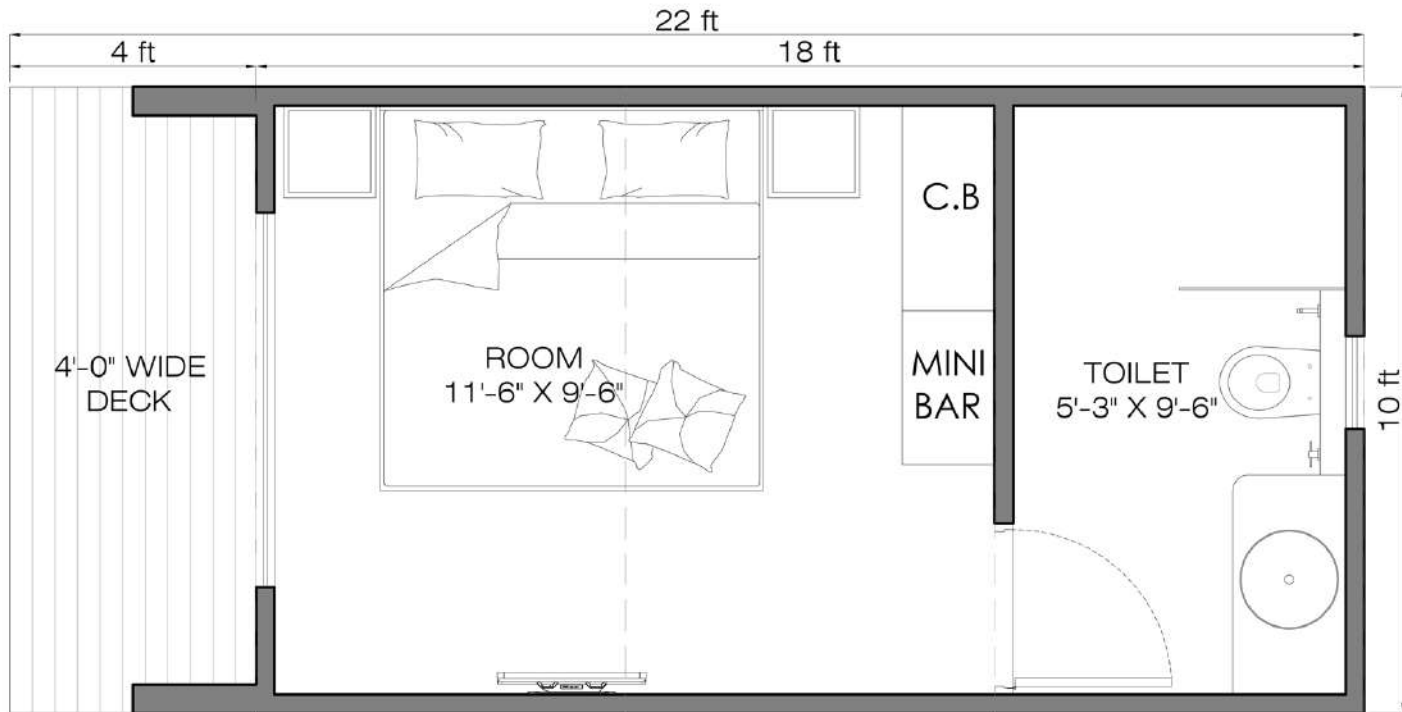


Loom Crafts

Glamping Pod-A Layouts





Rs. 8,50,000*

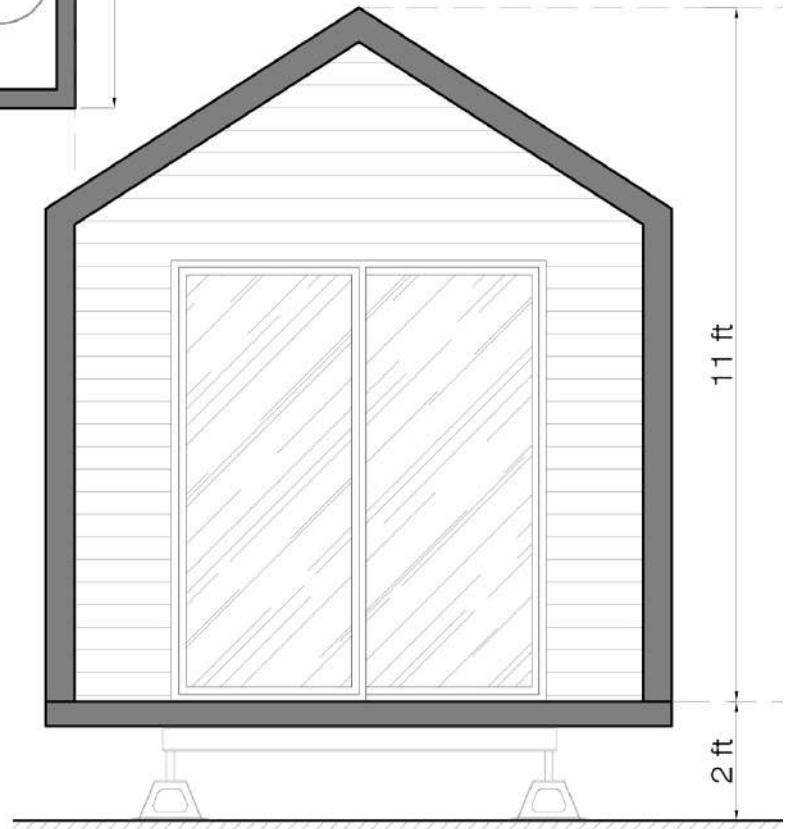
*Terms & Conditions as mentioned in last page

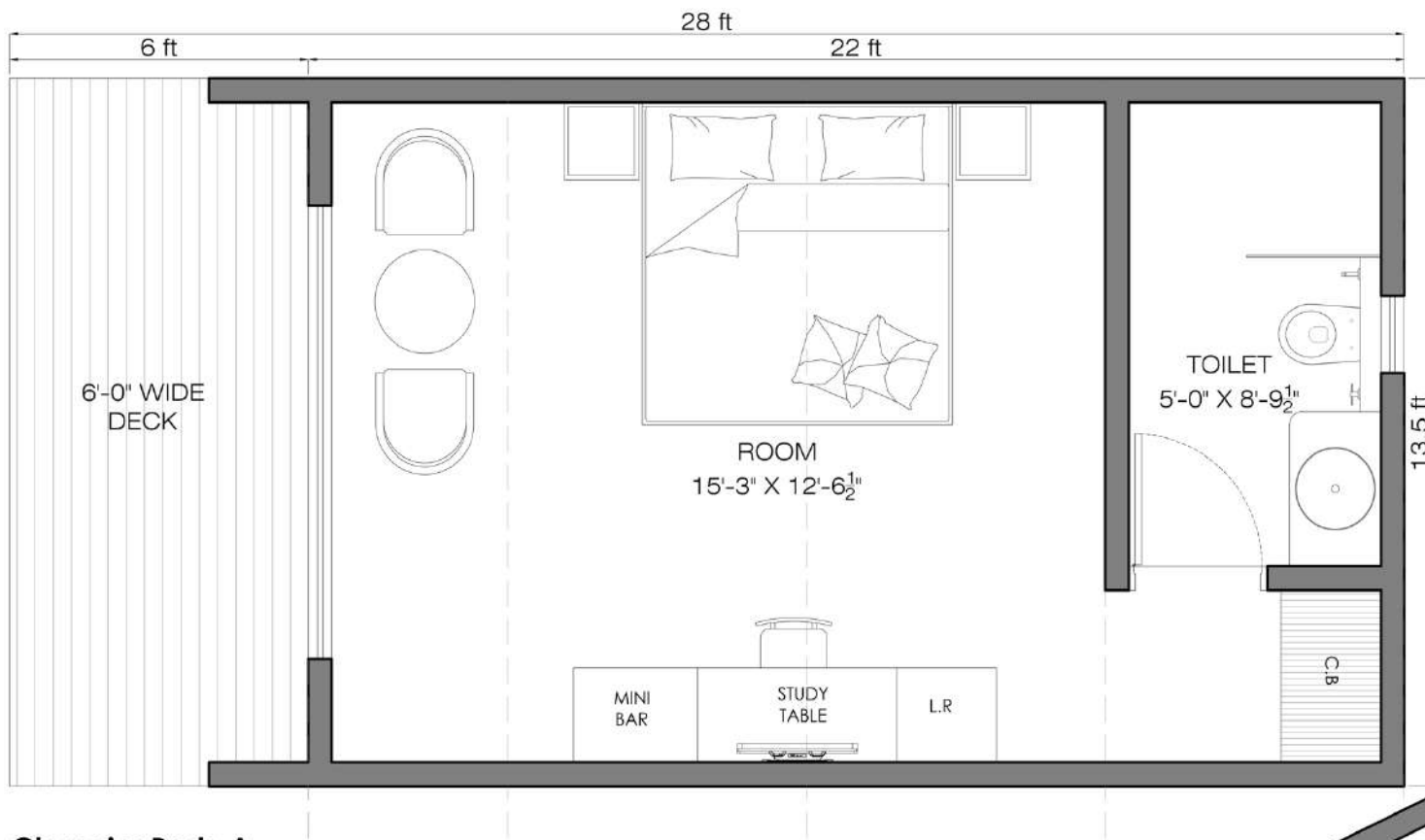
GlampingPods-A

COVERED AREA = 180 Sq.Ft

DECK AREA = 40 Sq.Ft

TOTAL AREA = 220 Sq.Ft





Rs. 13,50,000*

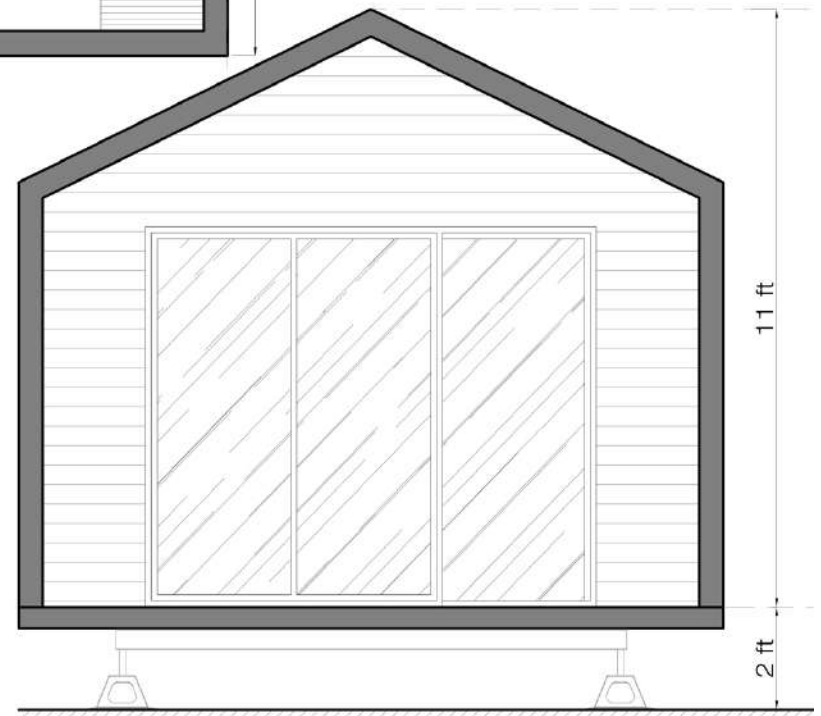
*Terms & Conditions as mentioned in last page

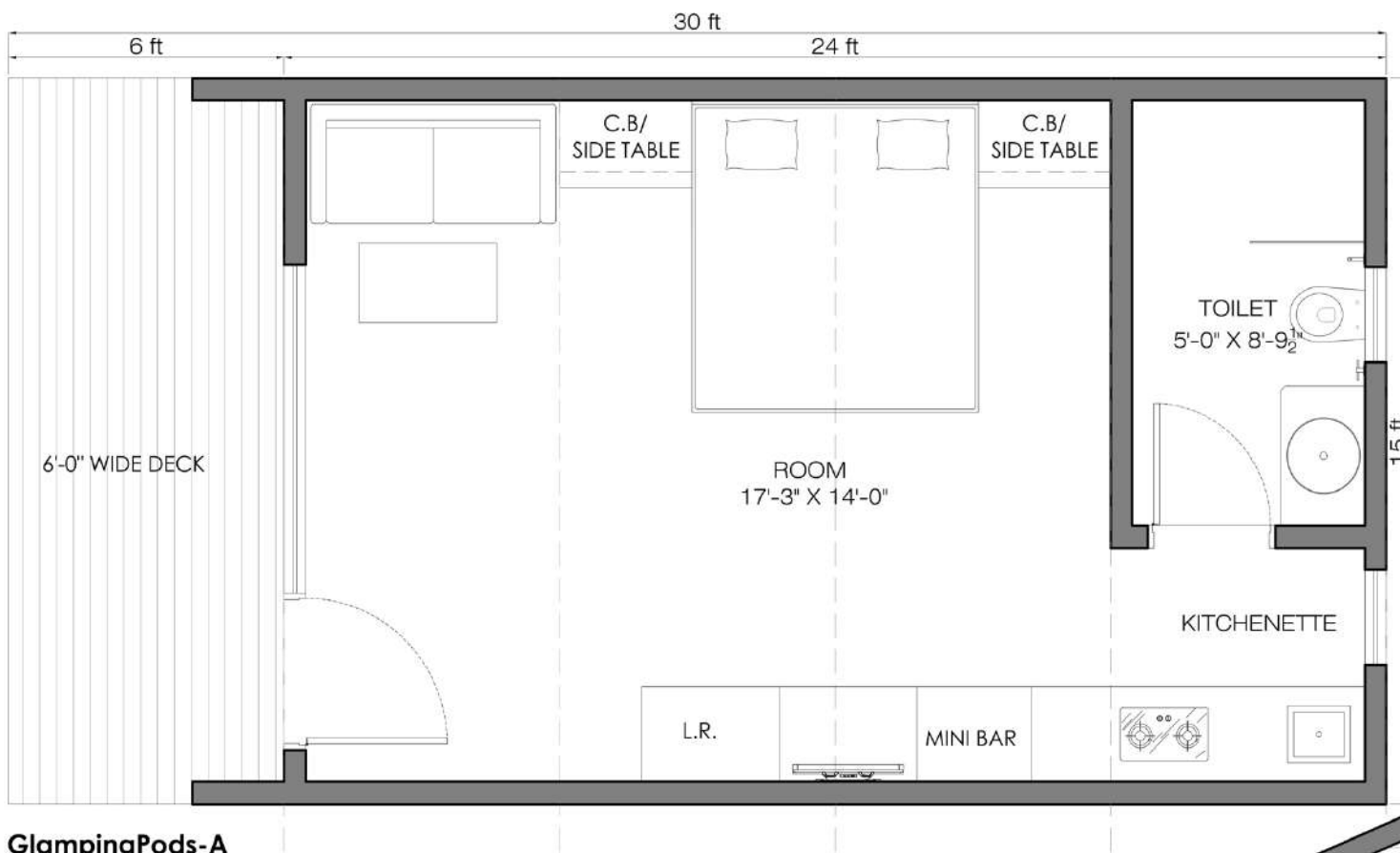
GlampingPods-A

COVERED AREA = 297 Sq.Ft

DECK AREA = 81 Sq.Ft

TOTAL AREA = 378 Sq.Ft





Rs. 14,85,000*

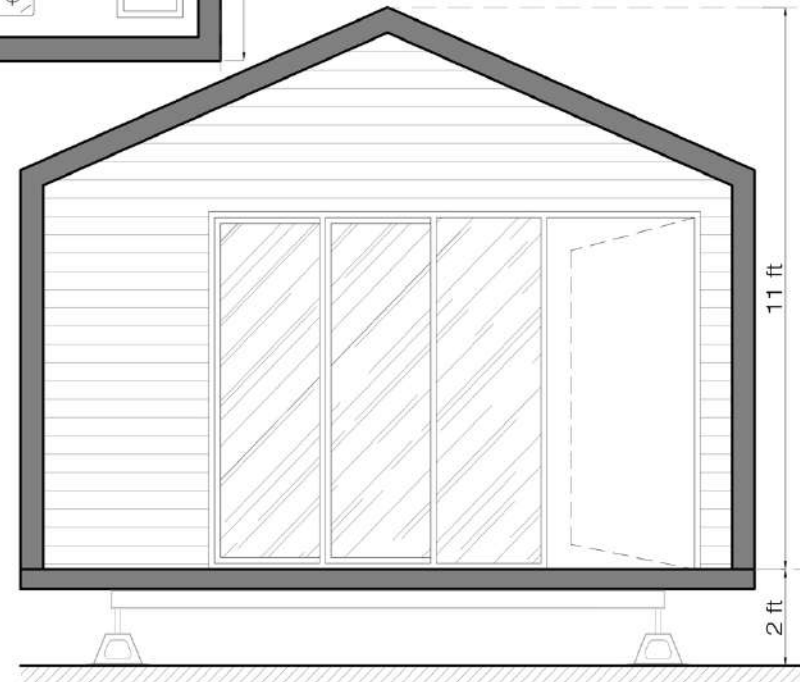
*Terms & Conditions as mentioned in last page

GlampingPods-A

COVERED AREA = 360 Sq.Ft

DECK AREA = 90 Sq.Ft

TOTAL AREA = 450 Sq.Ft



SPECIFICATIONS:

STRUCTURE: The entire structure is designed as a Hybrid with Light Gauge Steel framing technology from Australia using the latest CNC controlled machines and mild steel load bearing sections. The structures are designed to withstand high wind and seismic zones.

FOUNDATIONS / PLINTH: Our homes & cottages do not require any RCC plinth work on site as they come with pre-casted RCC foundation blocks which are just placed over the ground and steel tubular pipes are hammered inside the ground diagonally (Applicable only in case of solid flat land)

STRUCTURE WRAPPING: The entire steel structure is then wrapped with Eco Boards 12mm thickness. These boards are lightweight but very strong, water & termite resistant and are exterior grade high density.

INSULATION: The Walls and Roof are well insulated with Rock Wool insulation of thickness 100-150mm depending on the section sizes, which gives the structure protection from Heat, Cold and sound.

WATER PROOFING MEMBRANES: The entire external surface of the cottage is covered with water proofing membranes and sealed with Aluminium tapes.

INTERNAL WALL & CEILING: All the internal walls & ceilings are clad with German Pine panels, which are coated with special oils for longer durability. Option for painted walls also available.

EXTERNAL WALL & ROOF: The External walls are clad with Thermo Pine Wood of make Lunawood (Finland) or Powder Coated steel panels depending on the design of the cottage. The roof is also clad with powder coated steel panels, which can last up to 25 years in outdoor weathers. Rainwater gutters of make Monier available at extra cost.

INTERNAL & EXTERNAL FLOOR: The floors are fixed with heavy-duty cement fiberboards. After which, Common Living room & Bedrooms are fixed with Laminate flooring of make Green Panel with choice of colors to choose from. Toilets and Kitchen are fixed with vitrified tiles of make Kajaria. External decks are fitted with Thermo pine wood coated with weatherproof oils.

DOORS & WINDOWS: All internal doors are made of Solid skin doors. Sliding or fixed Doors / Windows and main doors are made of UPVC sections with 5mm

thick toughened glass. Options for DGU and mosquito mesh also available at extra cost. Skylights can be added in the roof without extra cost, skylight blinds also available at extra cost.

PLUMBING & TOILET FIXTURES: The toilet in the cottage comes complete with all internal pipelines of CPVC or UPVC along with toilet fixtures from Jaquar such as WC, Washbasin, Faucet etc. The toilet is fitted with pressure pumps, which is included in the price. The client just needs to connect the water input and waste output at site once the cottage erection is completed. Water storage tanks, shower glass partitions not included.

ELECTRICAL FITTINGS: Complete electrical fittings including Switches, Sockets, Fans, LED lights included. Internal wiring of make R R Kabel, Switch / Sockets of make Legrand, LED lights of make Jaquar, Fans of make Usha. Electronics such as TV, AC, Geysers not included and can be fitted by clients themselves. We do provide air-conditioning pipelines inside the walls as per the layouts.

FURNITURE: No fixed or loose furniture, soft furnishings or decorations included. Kitchen and wardrobes available at extra cost. Bathroom vanities included.

TERMS & CONDITIONS:

TAXES: GST @ 18% extra. No taxes on export orders.

TRANSPORTATION: Extra as per actuals. The cottage is sent flat packed to save freight cost.

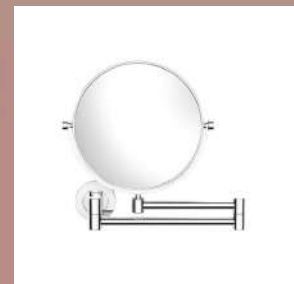
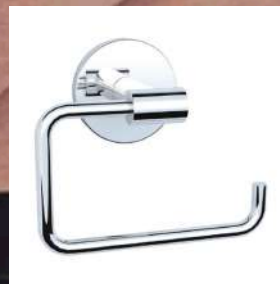
INSTALLATION: Included in the cost. Boarding & Lodging of the installation team to be arranged by the client. Rentals of Cranes to be borne by the client directly. For outside India, installation needs to be arranged by client.

PAYMENT TERMS: 50% advance, 25% after 30 days from the 1st advance, 25% balance before dispatch.

DELIVERY TIME: Within 90 days from the date of advance. Transportation & installation extra.

WARRANTY & LIFE SPAN: Our Homes & Cottages comes with 20 years warranty for any structural damages or leakages due to rains. Life Span of our homes & cottages can be over 50 years if properly maintained.

STANDARD BATHROOM FITTINGS (make Jaquar)





Express with Colours

Choose from a rich, sophisticated colour palette.
Give the touch of taste and elegance to your smart walls.



EXTERNAL WALL CLADDING

Lunawood Thermowood is an outstanding choice for facades. Thermowood claddings and battens are durable with remarkable dimensional stability in any climate. Lunawood Thermowood has beautiful brown tone which can be retained by protecting the surface with a pigmented treatment. Untreated surface turns beautifully silver grey over time, if exposed to UV-light.

[See Lunawood Thermowood Fact Sheet for more information \(pdf\)](#)





LAMINATE FLOORING (make Green Panel)

Greenpanel Laminated Floors consist of four distinct layers: an abrasion-resistance top layer, a decorative design layer, a 100% hardwood HDF core, and a moisture-resistant backing layer.

Greenpanel offers a warranty of 10 years on AC3 grade floors that are well suited for residential and low footfall commercial spaces. Greenpanel AC4 grade laminate floors—suitable for offices and malls—come with a warranty of 15 years.



SILVER SAVANNAH - FL001



TOPAZ OAK - FL002



TIMBER TRAIL - FL003



CLASSIC OAK - FL004



KALAHARI OAK - FL005



VINTAGE OAK - FL006



LUSCIOUS NOUGAT - FL007



WINEWOOD OAK - FL008



COUNTRY OAK - FL009



AUTUMN WALNUT - FL010



HIMALAYAN MERBAU - FL011



SILVER STREAKS - FL012



EARTHEN APPLE - FL013



AMAZON WALNUT - FL014



CHOCOLATE CARAMEL - FL015



VERMILLION FIRE - FL016



TROPICAL WALNUT - FL017



SEPIA TEAK - FL018



SUNDERBAN WENGE - FL019



EARTHEN CHERRY - FL020



AFRICAN IVORY - FL021



PLUSH WALNUT - FL022



RUSSIAN RIPPLES - FL023



SHERWOOD DOZUKI - FL024

Kajaria



Stain Resistant



Scratch Resistant



High Abrasion Resistant



Easy Installation



Easy To Clean



Fire Resistant



Zero Maintenance



Almost 0% Water
Absorption



High flexural strength



Thermal Resistant



Chemical Resistant



11 Mm Thickness

BATHROOM TILES OPTIONS



Wall: Turkey Grey Marble (Gloss) / Floor: London Gris (Matt)



Wall: Royal Satuario (Gloss) / Floor: London Gris (Matt)



Wall: Travertine Beige (Gloss) / Floor: London Beige (Matt)

Loom Crafts cottages / homes can be fitted with rainwater gutters from Monier under the brand "Luxron" which are made in Japan.

This is optional and available at extra cost

LuxronTM

Features

- Stylish & functional modular design
- High durability & superior strength
- Easy installation
- Zero maintenance



Colors available : Snow White



Reddish Brown



Black



**Non-Metallic Rainwater
Gutter System**

Loom Crafts

Loom Crafts Shade Systems Pvt Ltd
+918448440556 | info@loomcrafts.com | www.loomcraftsprefab.com

